



**Choi Xooang**  
**David Chan**  
**He Jian**  
**Tang Bohua**  
**Wang Dongwei**  
**Wang Fanseng**  
**Xiao Hua**  
**Zou Dawen**

**Presented by Art Seasons**  
**Booth No. A2**



**CHOI XOOANG, Korea (b.1975)**

Dreamers - Pink

2015

Oil on Resin & Wood

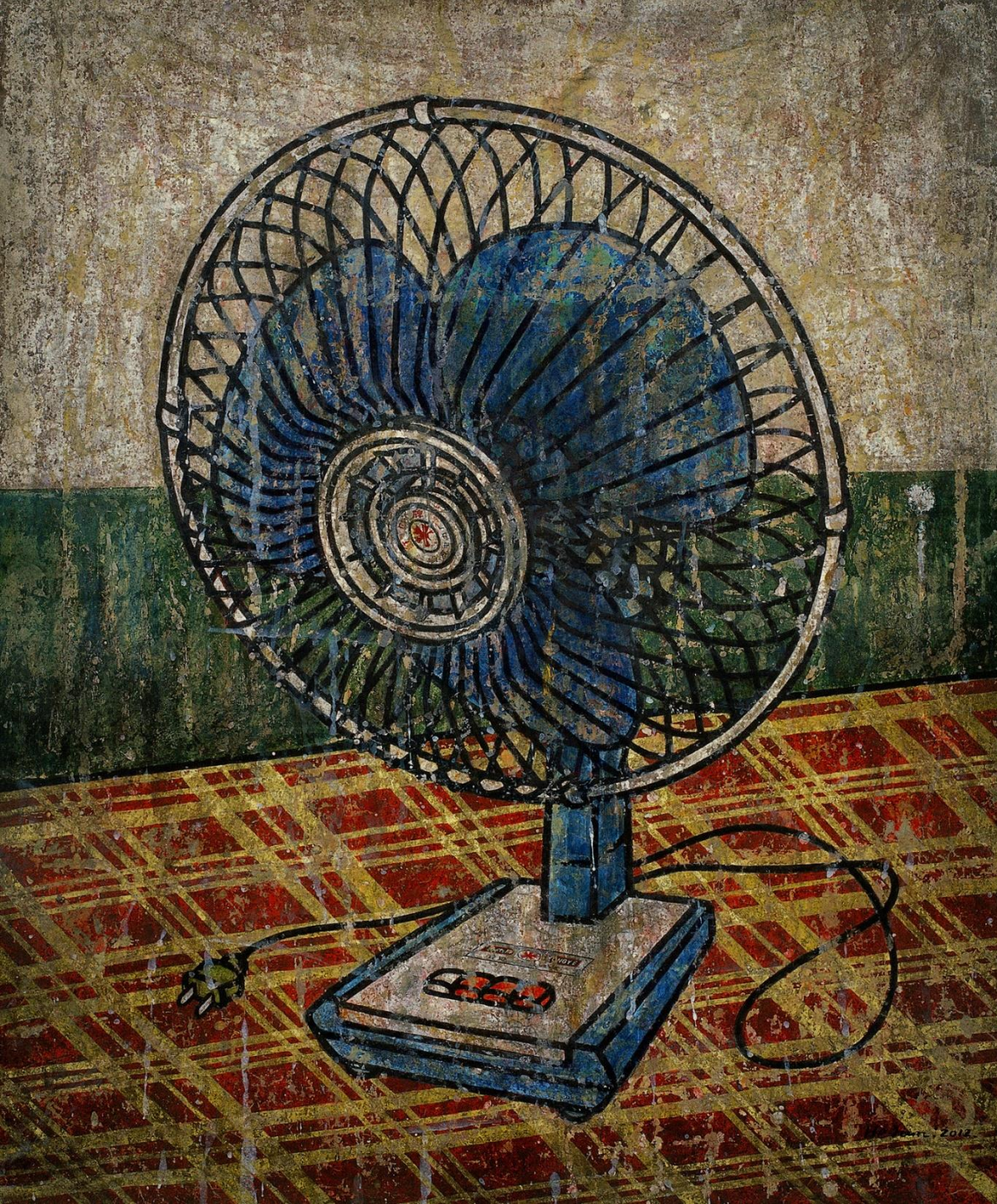
115 x 49 x 44 cm

Editions of 5



**DAVID CHAN, Singapore (b. 1979) | Garden of Earthly Delights | 2013 | Oil on Linen | 175 x 320 cm (Triptych)**





**HE JIAN 何剑 , China (b.1978)**

Electric Fan 电扇

2012

Chinese Pigments & Ink on Rice Paper

纸本重彩

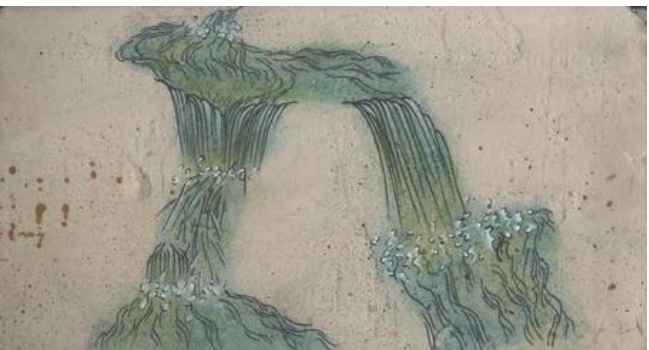
72 x 60 cm





HE JIAN 何剑, China (b.1978) | Electric Fan 电扇 | 2012 | Chinese Pigments & Ink on Rice Paper 纸本重彩 | 164 x 200 cm





**TANG BOHUA 汤柏华, China (b.1986)**

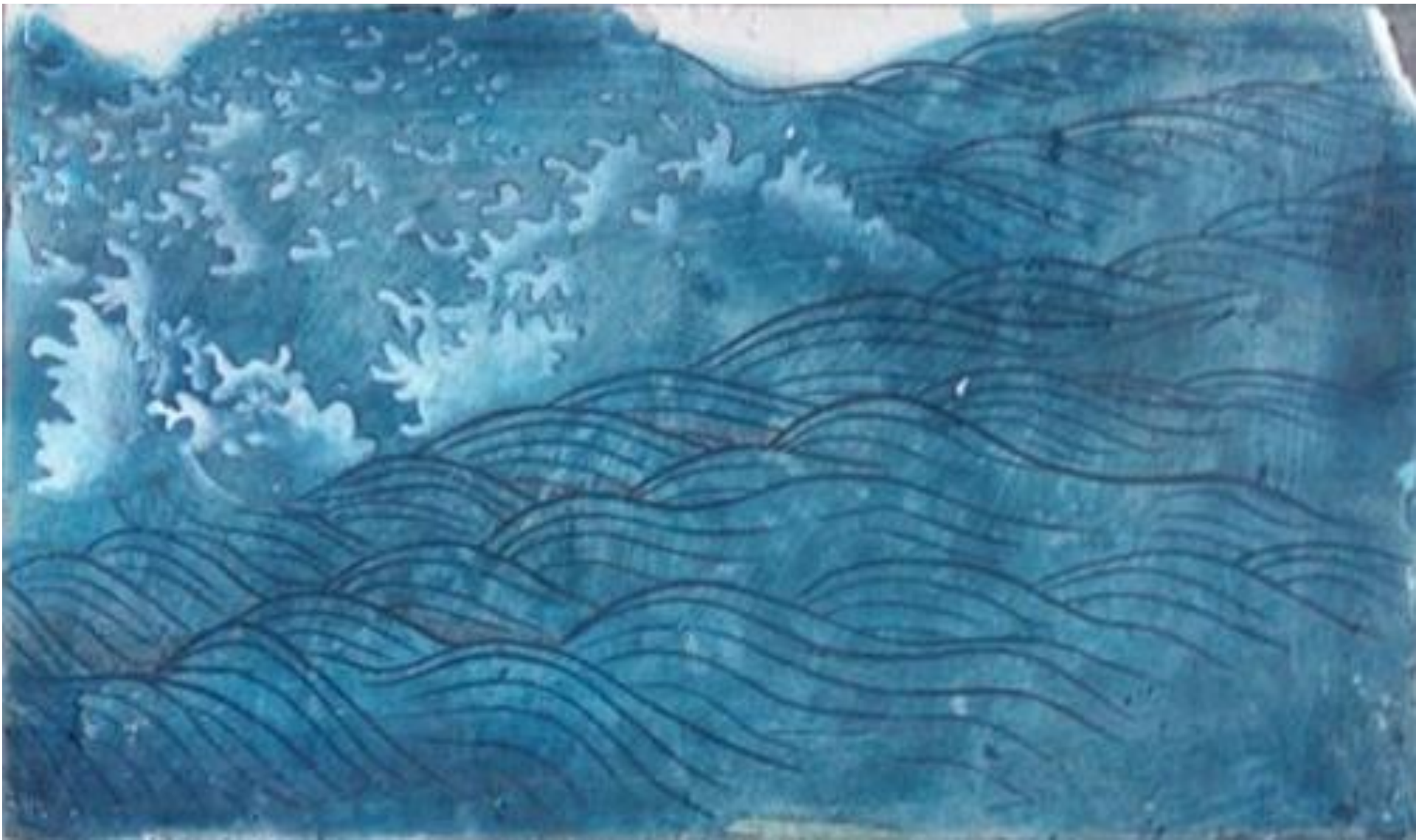
Spring Water 泉水特写

2013

Painting / Mineral on Plaster Board

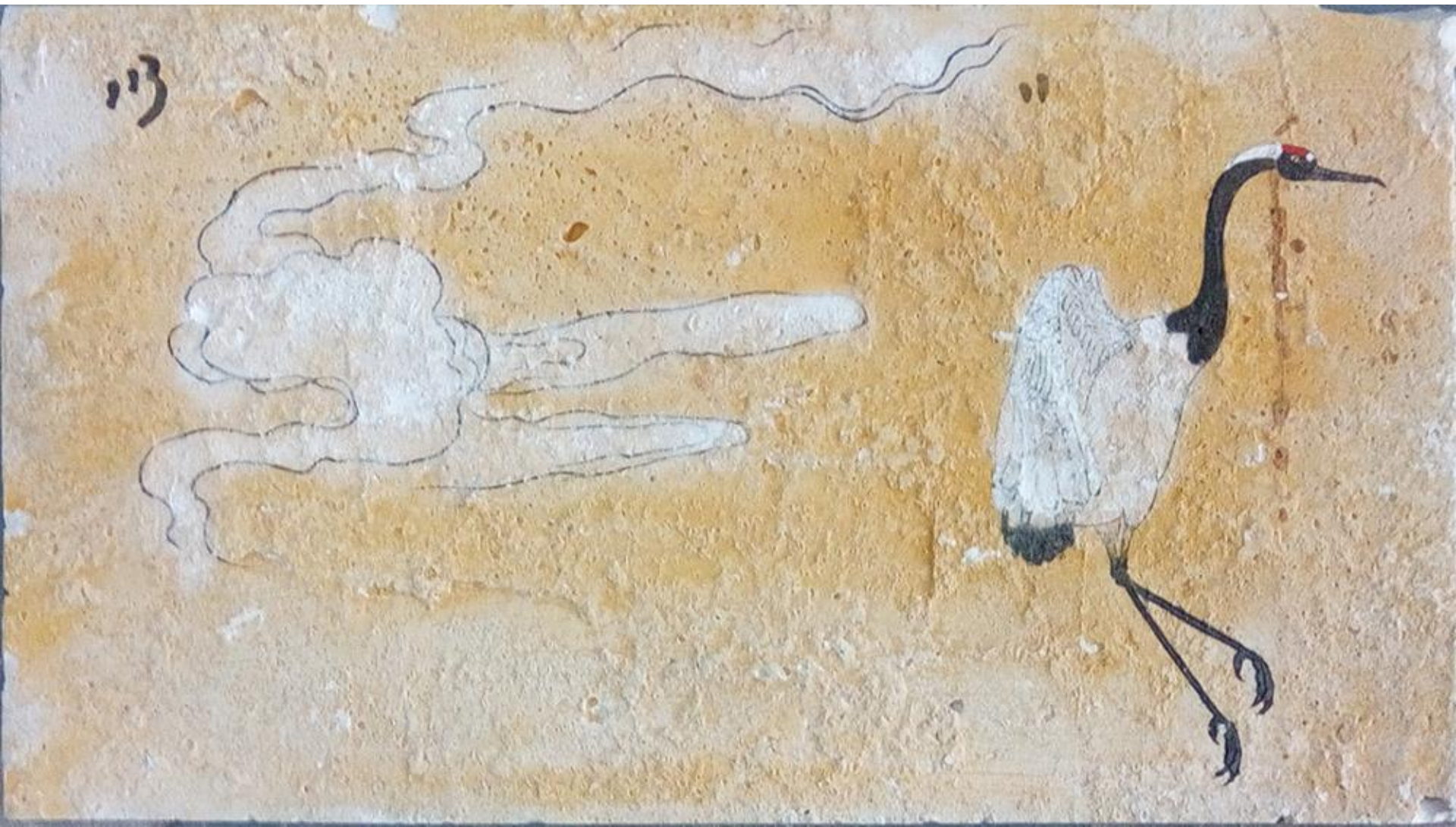
绘画/石膏板上矿物

19 x 33 x 2 cm x 15 pieces



**TANG BOHUA 汤柏华, China (b.1986) | Wave 海浪 | 2013 | Painting / Mineral on Plaster Board 绘画/石膏板上矿物**  
19 x 33 x 2 cm





**TANG BOHUA** 汤柏华, China (b.1986) | Crane 仙鹤 | 2013 | Painting / Mineral on Plaster Board 绘画/石膏板上矿物  
19 x 33 x 2 cm





**TANG BOHUA** 汤柏华, China (b.1986) | Sprig 花枝 | 2013 | Painting / Mineral on Plaster Board 绘画/石膏板上矿物  
33 x 19 x 2 cm





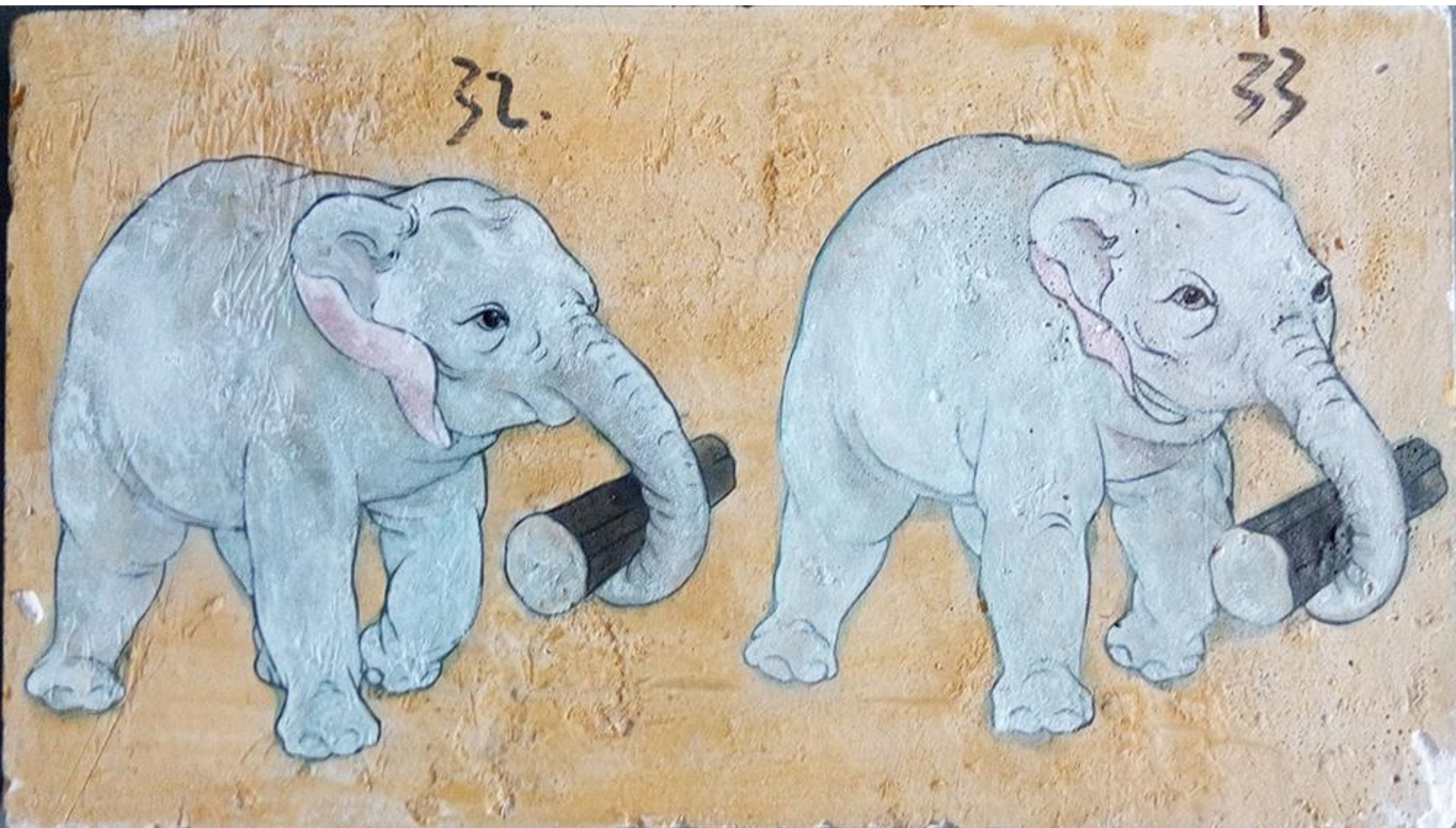
**TANG BOHUA** 汤柏华, China (b.1986) | Cloud 云 | 2013 | Painting / Mineral on Plaster Board 绘画/石膏板上矿物  
33 x 19 x 2 cm





**TANG BOHUA 汤柏华, China (b.1986) | Dragon Boat 龙船 | 2013 | Painting / Mineral on Plaster Board**  
绘画/石膏板上矿物 | 19 x 33 x 2 cm





**TANG BOHUA 汤柏华, China (b.1986) | White Elephant 白象 | 2013 | Painting / Mineral on Plaster Board**  
绘画/石膏板上矿物 | 19 x 33 x 2 cm





**TANG BOHUA** 汤柏华, China (b.1986) | Day Light 白日 | 2013 | Painting / Mineral on Plaster Board  
绘画 / 石膏板上矿物 | 19 x 33 x 2 cm



**TANG BOHUA** 汤柏华, China (b.1986) | The Burning Sun 太阳火 | 2013 | Painting / Mineral on Plaster Board  
画/石膏板上矿物 | 19 x 33 x 2 cm





**WANG DONGWEI 王冬维, China (b.1964) | Untitled 2 & 3 无题 2 & 3 | 2015 | Acrylic on Canvas 布面丙烯**  
50 x 60 cm x 2 Panels





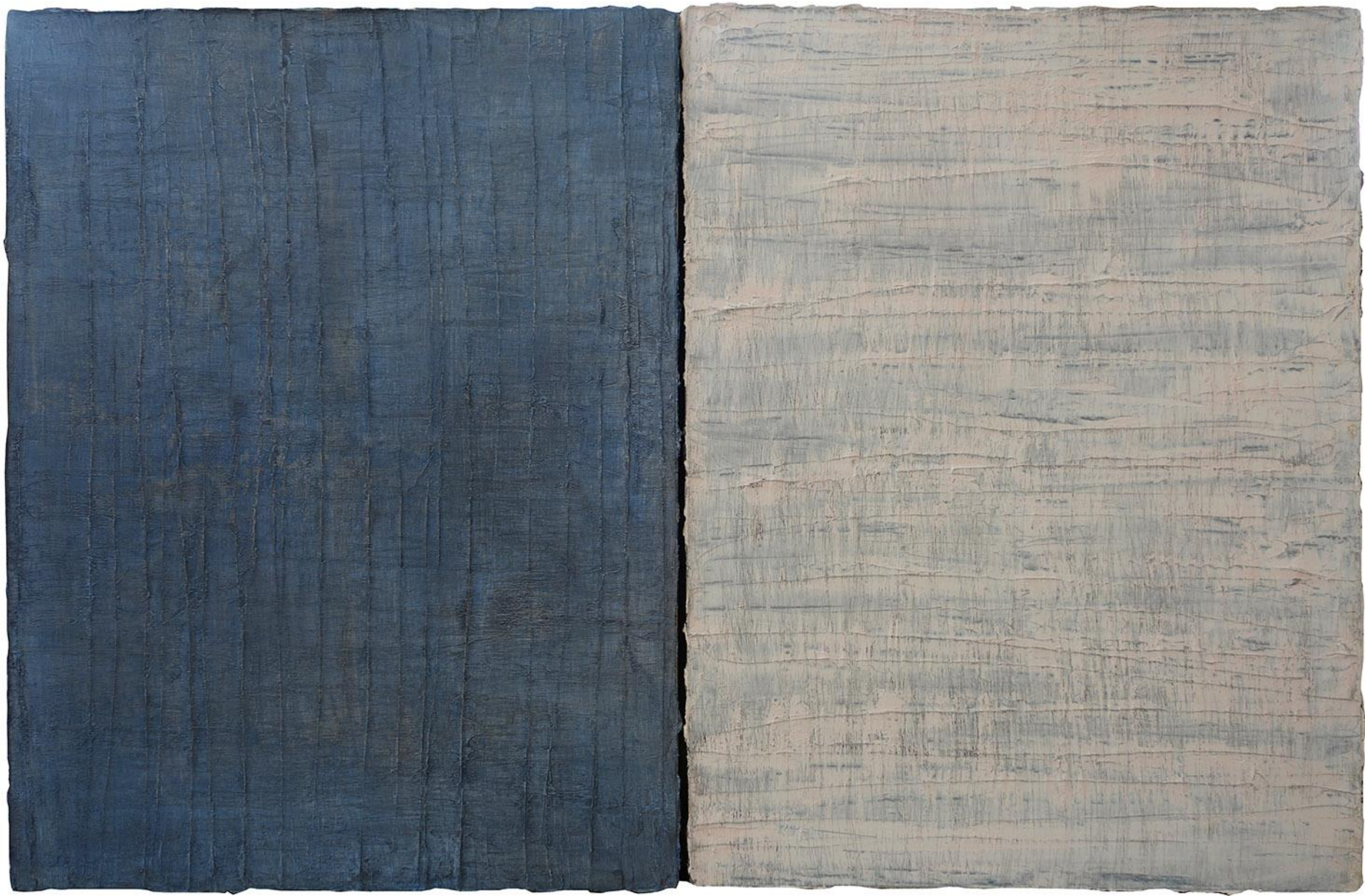
**WANG DONGWEI 王冬维, China (b.1964) | Untitled 33 无题 33 | 2012 | Acrylic on Canvas 布面丙烯 | 65 x 81 cm**





**WANG DONGWEI** 王冬维, China (b.1964) | Untitled 35 无题 35 | 2012 | Acrylic on Canvas 布面丙烯 | 65 x 81 cm





**WANG DONGWEI 王冬维, China (b.1964) | Untitled 56 & 57 无题 56 & 57 | 2012 | Acrylic on Canvas 布面丙烯 | 100 x 75 cm x 2 Panels**





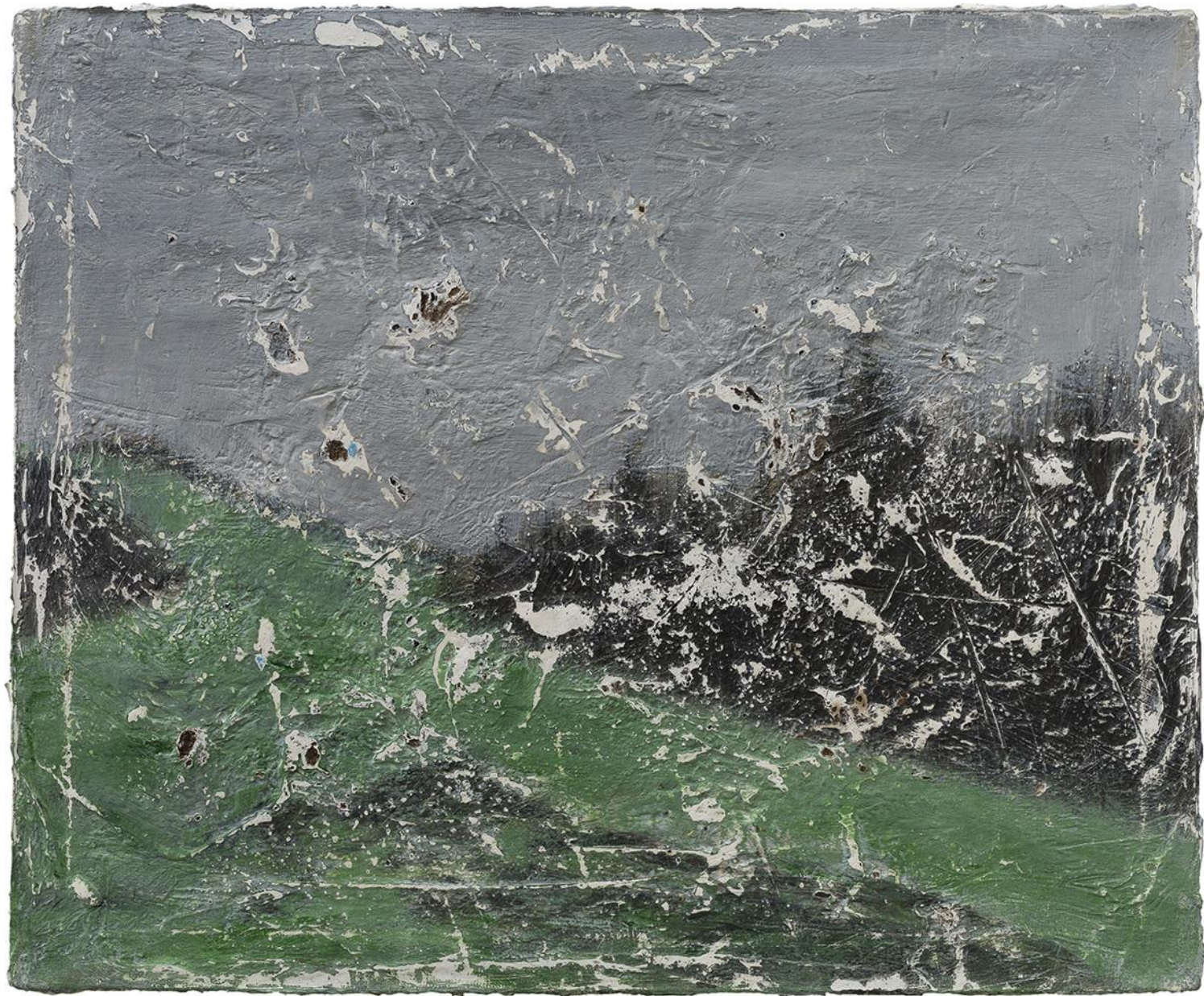
**WANG DONGWEI 王冬维, China (b.1964) | Landscape 19 风景 19 | 2014 | Acrylic on Canvas 布面丙烯 | 50 x 60 cm**





**WANG DONGWEI 王冬维, China (b.1964) | Landscape 29 风景 29 | 2014 | Acrylic on Canvas 布面丙烯 |**  
51 x 60 cm





**WANG DONGWEI 王冬维, China (b.1964) | Landscape 30 风景 30 | 2014 | Acrylic on Canvas 布面丙烯 |**  
50 x 60 cm





**WANG DONGWEI 王冬维, China (b.1964) | Landscape 33 风景 33 | 2014 | Acrylic on Canvas 布面丙烯 |**  
50 x 60 cm





**WANG DONGWEI 王冬维, China (b.1964) | Landscape 34 风景 34 | 2014 | Acrylic on Canvas 布面丙烯 |**  
50 x 60 cm





**WANG DONGWEI 王冬维, China (b.1964) | Landscape 34 风景 34 | 2014 | Acrylic on Canvas 布面丙烯 | 50 x 60 cm**





**XIAO HUA 小华, China (b.1986)**

**A Bits 一点点**

**2015**

**Rice Paper, Wire, Rabbit Glue**

**墨, 宣纸拼贴**

**140 x 120 cm**





**XIAO HUA 小华 , China (b.1986)**

Meet 遇到

2015

Ink, Rice Paper & Textile

墨，宣纸拼贴，及缝补

140 x 120 cm





**XIAO HUA** 小华 , China (b.1986) | Ninteen Holes 19个洞 | 2015 | Wax & Ink 蜡,墨水 | 60 x 60 cm





**XIAO HUA 小华, China (b.1986) | Greyiness of Time No. 1 时间的灰 No.1 | 2015 | Ink, Rice Paper & Textile  
墨, 宣纸拼贴, 及缝补 | 60 x 60 cm**





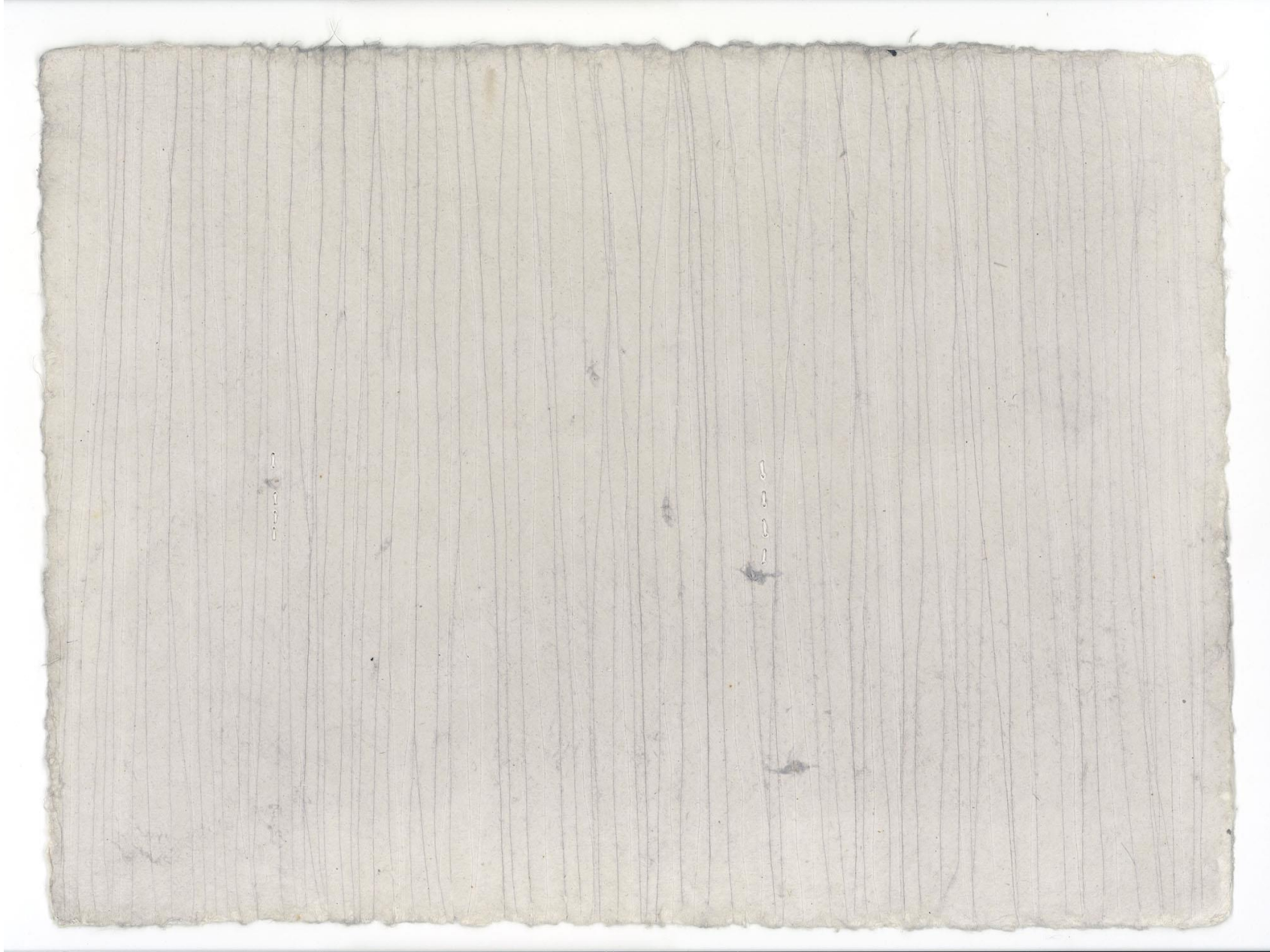
**XIAO HUA** 小华, China (b.1986) | Untitled 无题 | 2015 | Mixed Media on Paper 纸上综合媒介 | 28 x 38 cm





**XIAO HUA** 小华, China (b.1986) | Untitled 无题 | 2015 | Mixed Media on Paper 纸上综合媒介 | 28 x 38 cm





**XIAO HUA** 小华, China (b.1986) | Untitled 无题 | 2015 | Mixed Media on Paper 纸上综合媒介 | 28 x 38 cm





**WANG FANSENG 王梵僧, China (b.1984) | A Break on the Westward Journey 西行小憩 | 2014 |**  
Acrylic on Canvas 布面丙烯上光 | 100 x 100 cm





**ZHU XINYU 朱新宇, China (b.1980)**

Untitled 无题

2012 -2015

Oil on Canvas 布面油画

165 x 120 cm





**ZOU DAWEN** 邹达闻

**China (b.1988)**

She 45 她之45

2015

Wood 杨木

30 x 30 cm



**ZOU DAWEN** 邹达闻

**China (b.1988)**

She 46 她之46

2015

Wood 杨木

30 x 30 cm





**ZOU DAWEN** 邹达闻  
**China (b.1988)**  
She 47 她之47  
2015  
Wood 杨木  
30 x 30 cm



**ZOU DAWEN** 邹达闻  
**China (b.1988)**  
She 48 她之48  
2015  
Wood 杨木  
30 x 20 cm





**ZOU DAWEN 邹达闻, China (b.1988) | She 49 她之49 | 2015 | Wood 杨木 | 31 x 40 cm**



**ZOU DAWEN** 邹达闻  
**China (b.1988)**  
She 50 她之50  
2015  
Wood 杨木  
41 x 31 cm





**ZOU DAWEN** 邹达闻  
**China (b.1988)**  
She 51 她之51  
2015  
Wood 杨木  
30 x 20 cm



**ZOU DAWEN** 邹达闻  
**China (b.1988)**  
She 52 她之52  
2015  
Wood 杨木  
30 x 20 cm





**ZOU DAWEN 邹达闻, China (b.1988) | She 53 她之53 | 2015 | Wood 杨木 | 30 x 40 cm**



**ZOU DAWEN 邹达闻, China (b.1988) | She 54 她之54 | 2015 | Wood 杨木 | 20 x 30 cm**





**ZOU DAWEN 邹达闻, China (b.1988) | She 55 她之55 | 2015 | Wood 杨木 | 30 x 40 cm**



**ZOU DAWEN** 邹达闻

**China (b.1988)**

She 56 她之56

2015

Wood 杨木

30 x 30 cm





**ZOU DAWEN 邹达闻, China (b.1988) | She 58 她之58 | 2015 | Wood 杨木 | 30 x 41 cm**